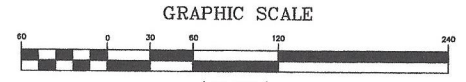


MAP CABINET 52 PAGE 72 8/16/08 KW 2045

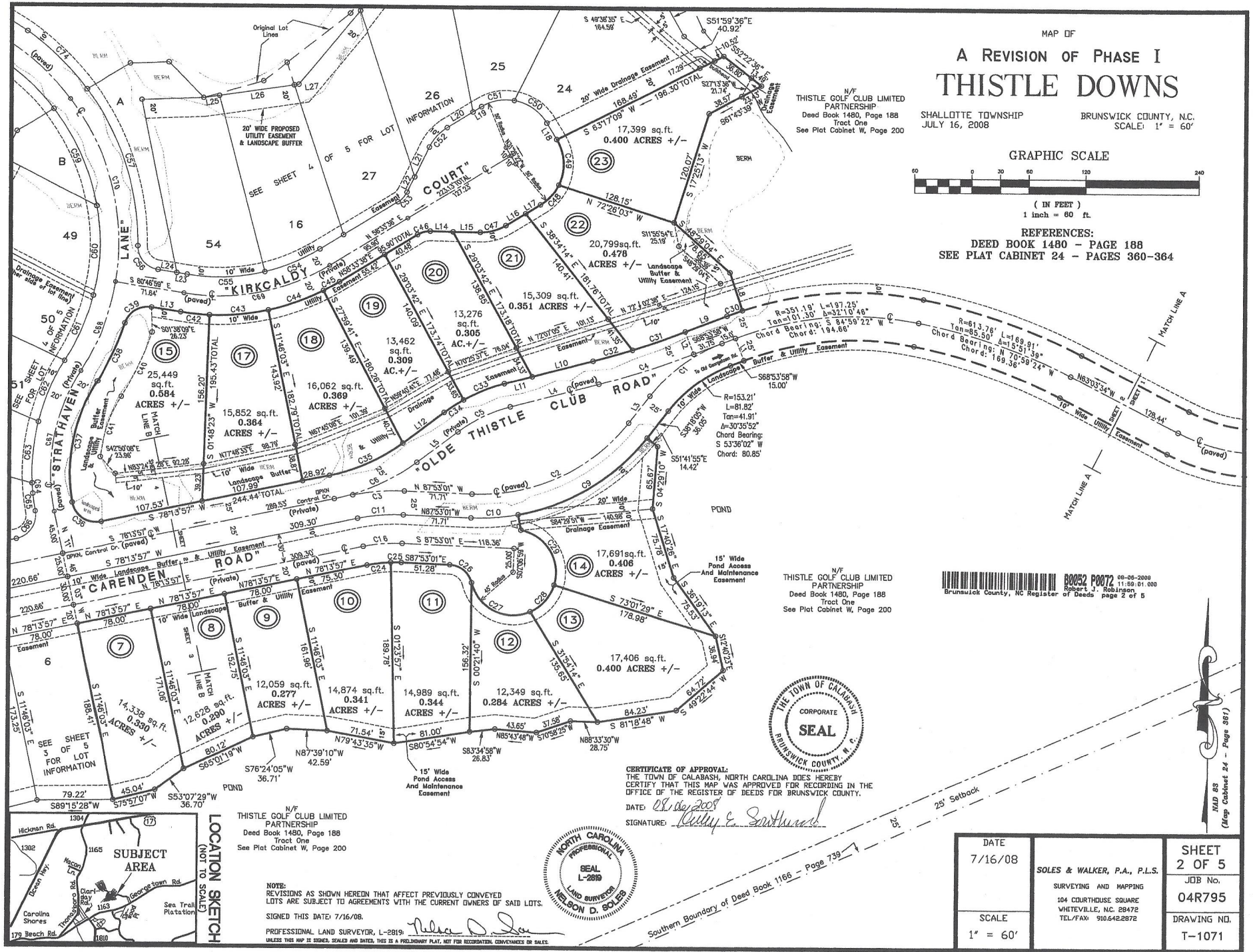
MAP OF  
**A REVISION OF PHASE I  
 THISTLE DOWNS**

N/F  
 THISTLE GOLF CLUB LIMITED  
 PARTNERSHIP  
 Deed Book 1480, Page 188  
 Tract One  
 See Plat Cabinet W, Page 200

SHALLOTTE TOWNSHIP  
 JULY 16, 2008  
 BRUNSWICK COUNTY, NC.  
 SCALE: 1" = 60'



REFERENCES:  
 DEED BOOK 1480 - PAGE 188  
 SEE PLAT CABINET 24 - PAGES 360-364



N/F  
 THISTLE GOLF CLUB LIMITED  
 PARTNERSHIP  
 Deed Book 1480, Page 188  
 Tract One  
 See Plat Cabinet W, Page 200

06-06-2008  
 11:58:01 AM  
 Robert J. Robinson  
 Brunswick County, NC Register of Deeds page 2 of 5

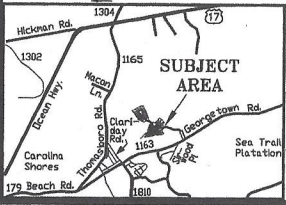


CERTIFICATE OF APPROVAL:  
 THE TOWN OF CALABASH, NORTH CAROLINA DOES HEREBY  
 CERTIFY THAT THIS MAP WAS APPROVED FOR RECORDING IN THE  
 OFFICE OF THE REGISTER OF DEEDS FOR BRUNSWICK COUNTY.  
 DATE: 8/16/08  
 SIGNATURE: *Curly E. Southward*



N/F  
 THISTLE GOLF CLUB LIMITED  
 PARTNERSHIP  
 Deed Book 1480, Page 188  
 Tract One  
 See Plat Cabinet W, Page 200

NOTE:  
 REVISIONS AS SHOWN HEREDIN THAT AFFECT PREVIOUSLY CONVEYED  
 LOTS ARE SUBJECT TO AGREEMENTS WITH THE CURRENT OWNERS OF SAID LOTS.  
 SIGNED THIS DATE: 7/16/08.  
 PROFESSIONAL LAND SURVEYOR, L-2819: *Nelson D. Soles*  
 UNLESS THIS MAP IS BOUND, SEALED AND DATED, THIS IS A PRELIMINARY PLAT, NOT FOR RECORDATION, CONVEYANCES OR SALES.



DATE 7/16/08	SOLES & WALKER, P.A., P.L.S. SURVEYING AND MAPPING 104 COURTHOUSE SQUARE WHITEVILLE, NC, 28472 TEL/FAX: 910.642.2872	SHEET 2 OF 5
SCALE 1" = 60'		JOB No. 04R795
		DRAWING NO. T-1071